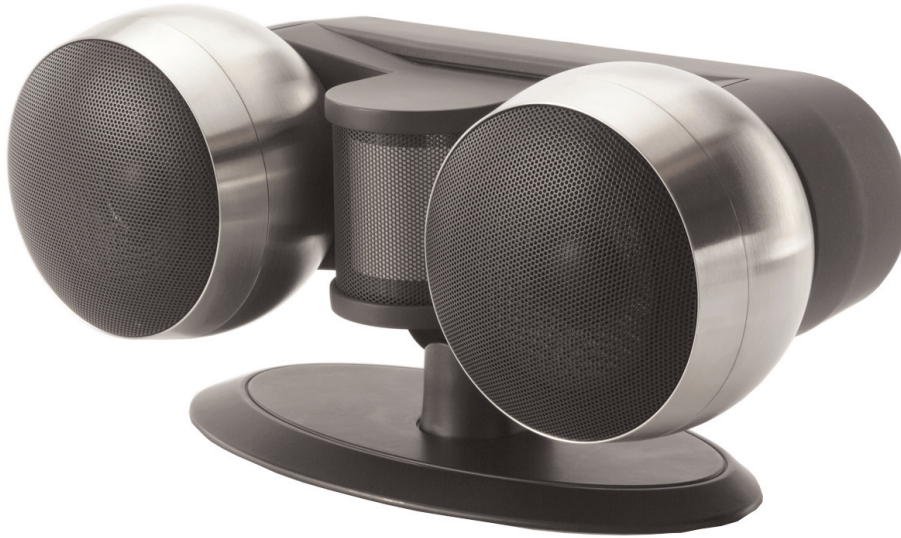


Reference Strada Loudspeakers



Owner's Manual



To find a dealer near you, please visit our web site at: www.roundsound.com
Anthony Gallo Acoustics, 20841 Prairie Street, Chatsworth, CA 91311 USA
Phone (818) 341-4488 • Fax (818) 341-2188

Name:	Reference Strada Loudspeaker Serial #		
Address:			
City:	State:	Zip:	
Telephone:	Email:		

Where did you first hear about the Reference Strada Loudspeakers?

- Magazine Web Dealer Other

How influential was your dealer in your decision this product?

- Very Somewhat Not At All

In what type of system will the loudspeakers be used?

- Stereo Home Theatre

Would you like to receive the Anthony Gallo Acoustics newsletter? _____

Can Anthony Gallo Acoustics contact you via e-mail to participate in a future survey? _____

Other speakers you listened to before choosing Reference Strada Loudspeakers: _____

Name and address of the dealer from which you purchased this Product: _____

	Excellent	Very Good	Good	Fair	Poor
Appearance					
Build Quality					
Size					
Sound Quality					
Ease of Set Up					
Mounting Options					
Match my decor					
Owners Manual					

Contents

Introduction	1
Welcome to Anthony Gallo Acoustics.....	1
About Your Stradas	1
Placing Your Stradas	3
Specifications.....	6
Installation	7
Breaking In Your Stradas	7
Unpacking and Inspection	7
Additional Items Required for Installation	8
Mounting Your Stradas	8
Connecting Your Stradas	9
Setting Speaker Controls at the Amplifier or Receiver.....	10
Warranty Information	11
Statement of Warranty	11
Service	13

Copyright Information

Copyright © 2009 Anthony Gallo Acoustics. All rights reserved.

This material may not be reproduced or copied, in whole or in part, without the written permission of Anthony Gallo Acoustics.

Introduction

Welcome to Anthony Gallo Acoustics

Thank you for purchasing the Anthony Gallo Acoustics Reference Strada loudspeakers. Years of engineering, development and testing ensure that these speakers will meet or exceed your expectations and provide you with outstanding performance and value.

The Stradas are provided in a center configuration for mounting in a horizontal orientation and in a side configuration for mounting in a vertical orientation, for use as the left and right loudspeakers for stereo or home theater listening.

Please take a few minutes to read this *Owner's Manual* to acquaint yourself with these special features and help you set up and use your Stradas. If you have any questions regarding your Stradas, please contact us by phone at (800) 459-4183 or by e-mail at techsupport@roundsound.com.

About Your Stradas

The Stradas were specially developed so that we could provide you with state-of-the-art performance loudspeakers that can be easily and unobtrusively incorporated into your home entertainment system.

Stradas perform as though the speaker enclosure is significantly larger than it actually is, yielding a deep and powerful low-frequency response that is up to two octaves lower than would otherwise be possible in speakers of this size. This strong low-frequency performance minimizes the need for a separate subwoofer in traditional stereo installations. Our patented S2 technology allows Stradas to be wall-mounted and provide amazing performance, regardless of the size of your listening area.

The Strada is the first speaker in the Anthony Gallo Acoustics line to utilize the company's proprietary Optimized Pulse Technology (OPT). OPT is an impulse correction and synchronization system designed to integrate the low, middle, and high frequencies into one unified sound source.

Stradas also incorporate our patented CDT™₃ cylindrical diaphragm transducer, redesigned to employ our latest speaker technology.

The unique design of the CDT₃ tweeter and its cylindrical shape provide a dispersion pattern of 120 degrees for the center configuration and 180 degrees for the side configuration (Figure 1). This allows substantial flexibility in positioning the speakers, since the same high-frequency response is delivered off-axis as is on-axis.

The CDT₃ and the patented S2 technology form a winning combination of clarity, precision and range not found anywhere near this price point for a speaker system. The S2 technology decouples the backwave of the driver from the air inside the enclosure. The benefits of our S2 technology in your home stereo speakers include superior low-frequency extension, improved transient response and a substantial increase in efficiency.

In concert with the OPT system, the re-engineered CDT tweeter and the patented S2 technology are crucial elements that combine to provide a truly emotional audio experience.

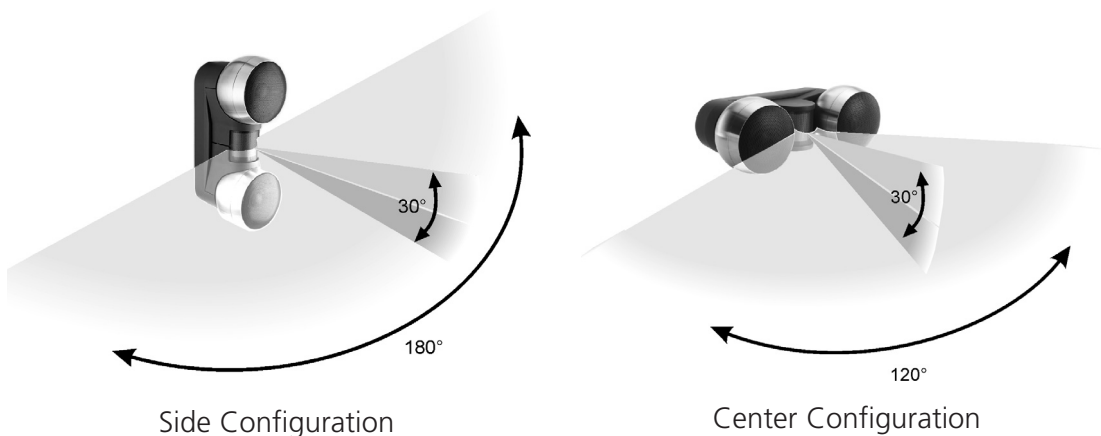


Figure 1. Dispersion Pattern of the CDT₃ Tweeter

Placing Your Stradas

If achieving maximum bass and warmth is your goal, the Stradas should be placed near a wall or other large surface.

The speakers can be mounted at any reasonable height. Point the Stradas toward the listening area to reduce floor and ceiling reflections. The left and right front speakers should be positioned so they are at the opposite ends of the base of a triangle whose tip is at the listening area (Figure 2).

Note: Stradas can be mounted on floor stands, table stands or wall mounts. They can even be placed in a cubbyhole or wall unit without significant degradation in sound quality. Refer to page 8 for additional information concerning these mounting alternatives.

An example of a stereo (2.0 configuration) setup using two floor-mounted Stradas is shown in Figure 2.

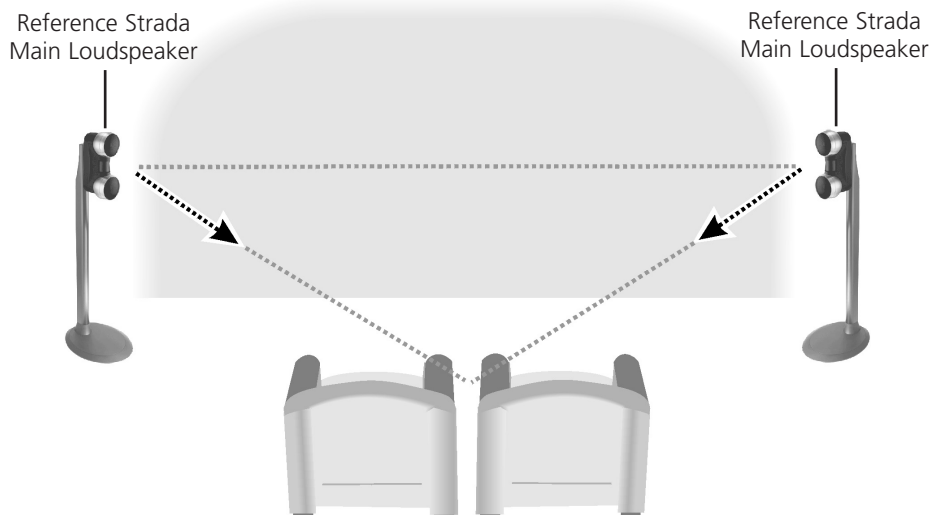


Figure 2. Example of a Stereo (2.0 Configuration) Setup

An example of a stereo with subwoofer (2.1 configuration) setup using two floor-mounted Stradas and a Gallo TR-3 subwoofer is shown in Figure 3.

Note: The subwoofer can be positioned practically anywhere, since low frequency audio below 80 Hz is non-directional. However, best results are usually obtained when the subwoofer is placed between the left and right front speakers.

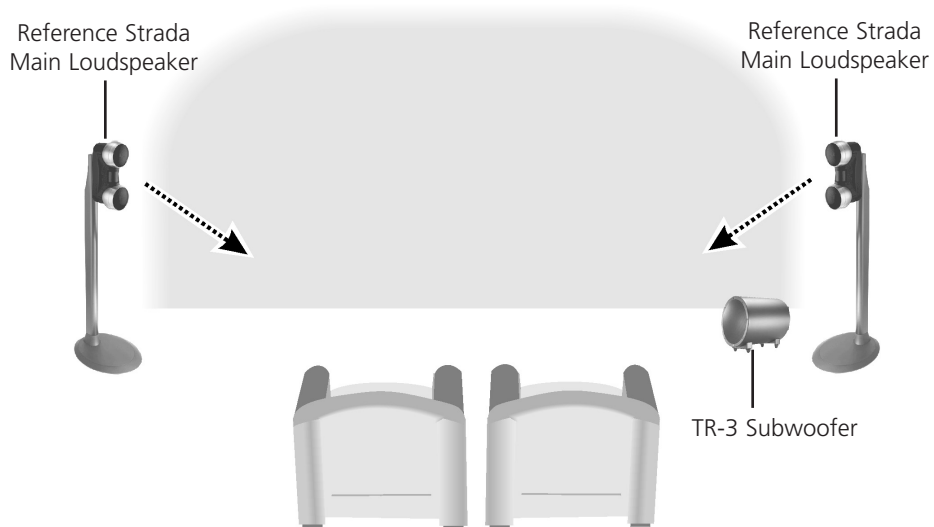


Figure 3. Example of a Stereo With Subwoofer (2.1 Configuration) Setup

An example of a surround sound with subwoofer (5.1 configuration) setup using two floor-mounted Stradas, one table-mounted Strada front center loudspeaker, two floor-mounted Stradas, and a Gallo TR-3 subwoofer is shown in Figure 4.

Note: In a typical home theater with five Strada, a 7.1 configuration is not required.

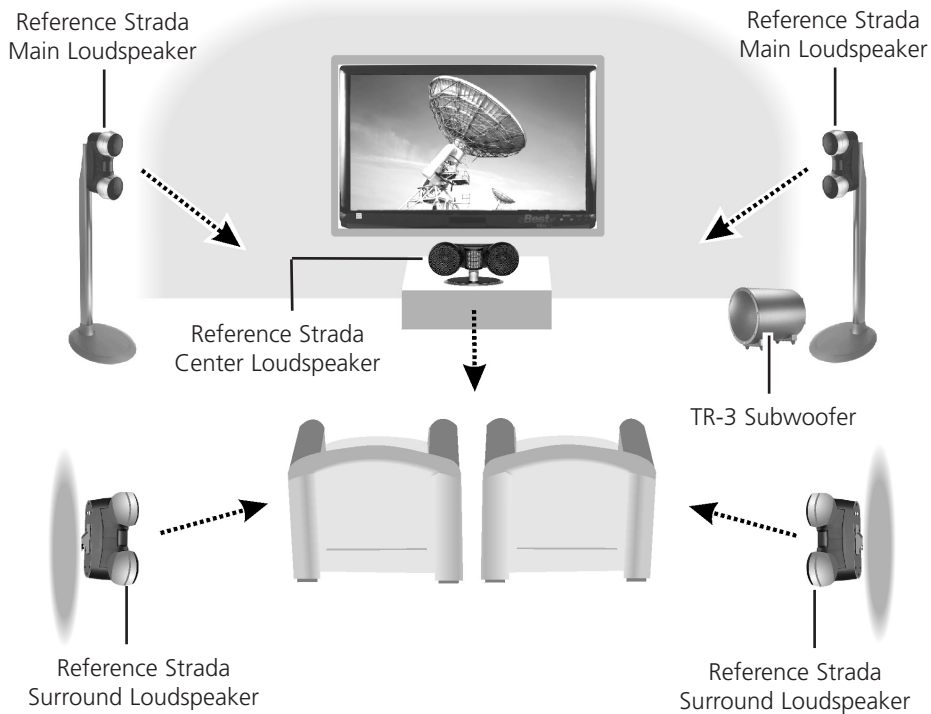


Figure 4. Example of a Surround Sound (5.1 Configuration) Setup

Specifications

Frequency Response	45 Hz – 20 kHz \pm 3 dB (in room with boundary reinforcement; loudspeakers within 1 foot of wall).
Impedance	8 ohms nominal.
Sensitivity	87 dB at 1 watt and 1 meter.
Power Handling	150 watts RMS unclipped music power. Minimum suggested power 10 watts RMS.
Tweeter	Patented CDT ₃ (Cylindrical Diaphragm Transducer), sporting 180° (for the side configuration) or 120° horizontal dispersion (for the center configuration) from 3 kHz to above 20 kHz.
Woofers	Two 4-inch dynamic hyperbolic carbon fiber drivers optimized to integrate seamlessly with the CDT ₃ tweeter without the need for a crossover.
Enclosure Type	Sealed, with auxiliary bass cavity supplementation and patented S2 loading.
Enclosure Composition	Powder-coated cast aluminum chassis, with brushed stainless steel spheres and powder-coated stainless steel grills.
Dimensions	Width: 5.0 in. (12.7 cm) Height: 13.5 in. (34.3 cm) Depth: 7.5 in. (19.1 cm)
Connections	5-way gold-plated binding posts developed specifically for Anthony Gallo Acoustics
Weight	11.4 lbs. (5.2 kg)
Finishes	Brushed stainless steel spheres with with a black frame or an all-black finish.
Warranty	One year parts and labor. Five years if product is registered within 60 days of purchase and with all documentation.*

* Documentation is necessary for us to determine the purchase authenticity of all Gallo products. There are no authorized online retailers other than "Gallo Direct.com" for Anthony Gallo products, and there will be no support or warranty for products purchased anywhere else online.

Installation

Breaking in Your Stradas

Your new Strada loudspeakers require a short period of time (a “break-in” period) to develop their full sound potential. The break-in period requires approximately 50 hours, although you can expect to hear a marked increase in both low and high frequency performance within the first 20 hours. You will likely experiment with placement of your loudspeakers (in particular, proximity of the speakers to walls and placement of the subwoofer) during the break-in period.

You are encouraged to walk about the listening space during the break-in period and listen for consistency between highs and lows. Slight changes in the position of the subwoofer, for example, can have a dramatic impact on the overall sound of the system and will likely enable you to eliminate “bumps” of either high or low frequency.

Unpacking and Inspection

Each Strada and its accompanying *Owners’ Manual* are packaged together in a single carton.

Note: If you purchased a floor mount, table stand, or a wall mount for your Strada, these will be packaged in a separate carton. Instructions for assembling and installing these items will be included in their carton.

Carefully inspect your Strada immediately after unpacking it. If you note any damage, please contact your dealer. Do not install or use your Strada if it appears to be damaged.

Additional Items Required for Installation

The following additional items are required when installing your Stradas and connecting them to your home theater system:

Item	Description
Mounting Hardware	A floor mount, table stand, or a wall mount can be used for mounting your Stradas. These can be obtained from your Anthony Gallo Acoustics dealer.
Connecting Wire	Two-conductor, 18-gauge, solid-core, oxygen-free wire should be used to connect Stradas to your home theater system. This wire is optional and can be obtained from Anthony Gallo Acoustics.
Adjustable Wrench	A small adjustable wrench should be used to tighten the speaker connections.

Mounting Your Stradas

Your Stradas can be used with a **floor stand**, a **table stand**, or a **wall mount** (Figure 5). Separate instructions are provided for assembling the mounting hardware and attaching it to the rear of your Stradas.

Note: If you purchased a floor stand, table stand, or a wall mount for your Strada, these will each be packaged in a separate carton. Installations for assembling and installing these items are included in their carton.

When you initially install your Stradas, you will likely change the location and/or position of one or more of the speakers before you find that the speaker locations and positions are optimal for the particular size, geometry, and construction of your home theater and the listening area. Also, the speakers require a break-in period of approximately 50 hours to develop their full sound potential.



Figure 5. Strada Mounting Alternatives

Therefore, we recommend that you wait until the break-in period is over and you have determined the optimal location and position for each speaker before permanently attaching your speakers to a wall.

If you have questions concerning the placement or positioning of your Stradas, either contact your Anthony Gallo Acoustics dealer, contact us by phone at (800) 459-4183, or contact us by e-mail at techsupport@roundsound.com.

Connecting Your Stradas

Before connecting your loudspeakers to your home theater receiver or amplifier, be sure to turn off the receiver or amplifier and unplug it from the power outlet.

Caution: Failure to turn off the receiver or amplifier and unplug it from the power outlet before connecting your Stradas may cause damage to your home theater system.

Using two-conductor, 18-gauge, solid-core, oxygen-free wire, connect the positive (red) and negative terminals of each speaker to the corresponding positive (+) and negative (-) terminals on your receiver or amplifier.

Important: Be sure that each positive (red) connector on your Stradas is connected to the corresponding positive (+) speaker output connector on your home theater receiver or amplifier receiver. If the positive (red) and negative connectors on one of your speakers are inadvertently switched, that speaker will be out of phase with the other speakers and the sound will be muffled.

Setting Speaker Controls at the Receiver or Amplifier

After you have connected your Stradas, set the controls for those speakers on the receiver or amplifier as outlined below:

Control	Setting
Speaker Size	Small or Normal
Crossover Frequency	80 to 120 Hz on stands 40 to 80 Hz wall mounted

Note: Always follow the instruction manual for your audio visual receiver when setting speaker controls.

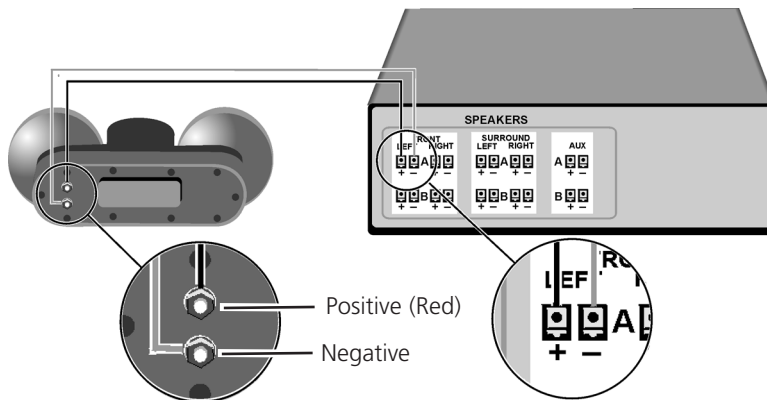


Figure 6. Loudspeaker Connections

Warranty Information

You must fill out and return the warranty card or register your warranty on our web site: <https://www.roundsound.com/registration.php> This will establish your ownership and activate the warranty of your Reference Strada loudspeakers.

When you enter the warranty information, you will need the serial number of each Strada. The serial number is located on the rear of the speakers.

The Stradas come with a five-year parts and labor warranty. The warranty is valid for the original purchaser only and cannot be transferred to subsequent users of this product.

Statement of Warranty: Anthony Gallo Acoustics Limited Warranty

Anthony Gallo Acoustics products must be purchased through an Authorized Dealer or Distributor to receive warranty service. If you purchased your product from an On-line Auction, Internet Reseller, un-authorized Dealer or Distributor, your product(s) warranty is void and you will not receive any service or repair.

We warrant this product to be free from defects in materials and workmanship for the specified terms stated above. Anthony Gallo Acoustics will, at its option, repair or replace this product or any defective parts. An original invoice must be retained and the product registered with Anthony Gallo Acoustics to establish ownership.

This warranty will be void if:

1. Any defect in this product is the result of abuse, misuse, damage in transit, defective associated equipment, faulty installation, the use of the unit with equipment for which it was not intended, or acts of God.
2. The unit has been operated contrary to instructions contained in this Owners Manual.
3. The unit has been serviced by unauthorized personnel.

4. The serial number has been altered or removed.
5. If the unit has been purchased through an unauthorized dealer or web reseller.

Warning: With any speaker, excessively high volume levels will cause extreme heat build-up in the voice coil. This can lead to intermittent failure, permanent damage to the driver, and a need for driver replacement. Abnormal excursions can cause drivers to hit their stops to make audible mechanical noises. This type of abuse from overdriving due to excessive volume levels is not covered under warranty.

EXCLUSIONS OF CERTAIN DAMAGES

Anthony Gallo Acoustics liability is limited to the cost of repair or replacement, at our option, of any defective part or product and shall in no event include incidental or consequential damages of any kind.

The above provisions do not preclude the operation of a state statute, which in certain circumstances may not allow some of the limitations and exclusions described in this warranty. To obtain warranty service, please call the dealer from whom you purchased your equipment.

WHAT WE WILL PAY FOR

We will pay all labor and material expenses for covered items, but you must pay any shipping charges if it is necessary to ship the product to us or to an authorized dealer. If the repairs are covered by warranty, we will pay the return shipping charges.

THIS WARRANTY GIVES YOU SPECIFIC LEGAL RIGHTS. YOU MAY ALSO HAVE OTHER RIGHTS, WHICH MAY VARY FROM STATE TO STATE.

Service

If your Stradas require repair:

1. Please contact the authorized Anthony Gallo Acoustics dealer from whom the product was originally purchased. It may be helpful to have the original sales receipt available to determine warranty eligibility. Determine how the dealer can be of help in providing troubleshooting, repair, or service for your product.
2. If it is impractical or impossible to contact your original dealer, refer to the Dealer Locator section found on www.roundsound.com. Locate your nearest authorized dealer and contact the dealer to arrange for service.
3. If you choose to, you can send your product to Anthony Gallo Acoustics Factory Service. Carefully pack the product in its original carton and ship it to the service center. A copy of your receipt may be necessary to determine in-warranty or out-of-warranty status. Please call the service center for an RA# with a description of the problem, your return address, and daytime phone number. It is suggested you choose a carrier that provides parcel tracking and provides insurance.

Warranty privilege is null and void for Anthony Gallo Acoustics products that are purchased through non-authorized retailers, Internet sales from online retailers other than "Gallo Direct.com," and catalog sales.

Please fill out the warranty information on the reverse side of this card. Then detach and return it to us for your five year product warranty.



Place
Stamp
Here

Anthony Gallo Acoustics
20841 Prairie Street
Chatsworth, CA 91311 USA